

SGHS Variance Report 2024

Start of Year Achievement: Reading

	Well Below	Below	At	Above	Well Above	Total At or Above (%)
7	10 (8%)	20 (15%)	96 (72%)	7 (5%)	0 (0%)	77
8	31 (22%)	28 (20%)	81 (58%)	0 (0%)	0 (0%)	58
9	25 (14%)	31 (18%)	89 (51%)	14 (8%)	16 (9%)	68
10	17 (10%)	15 (9%)	129 (77%)	3 (2%)	3 (2%)	81

End of Year Achievement: Reading

	Well Below	Below	At	Above	Well Above	Total At or Above (%)
7	5 (4%)	19 (14%)	72 (54%)	31 (23%)	7 (5%)	82
8	11 (8%)	28 (19%)	77 (53%)	16 (11%)	12 (8%)	73
9	30 (17%)	37 (21%)	76 (43%)	18 (10%)	16 (9%)	62
10	9 (5%)	14 (8%)	130 (78%)	8 (5%)	5 (3%)	86

Accelerated Reading

	Insufficient	Expected	Accelerated	Total making required progress (%)
7	23 (17%)	68 (51%)	42 (32%)	83
8	15 (11%)	37 (26%)	88 (63%)	89
9	46 (32%)	46 (32%)	53 (37%)	69
10	50 (32%)	43 (27%)	65 (41%)	68

This data is based off the OTJs that were put in EDGE at the start of the year and the end of the year. The expectations of where students are at are different at the beginning of the Year and the End of the Year e.g. Y10 at the beginning of the year would be expected to be at beginning of Level 5, whereas by the end of the year Proficient or Advanced at Level 5. The data can be broken down via ASSAY to look at how low / high students are – this a broad brush stroke in this form.

Students who have accelerated in their learning have made 2 or sub curriculum levels of progress e.g. Beginning to Advanced; Proficient at one level then Beginning at the next.

PAT Reading Comprehension Data follows. Key points

PAT data broken down by Ethnicity – look to see progress in each ethnic group over time (we started PATs in 2023 so we are starting to get longitudinal data). From 2024 onwards Y7 and new students are the only students who do PATs at the start of the year. All other students are tested in Term 4 only.

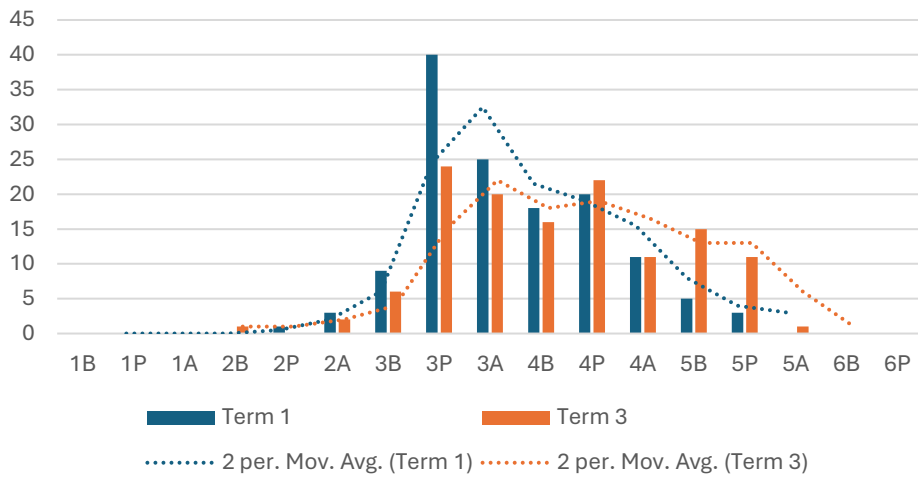
Y7 – progress in all groups

Y8 – Pacifica students have the greatest progress

Y9 – Pacifica data of a concern

Y10 – Pacifica progress appears less than others

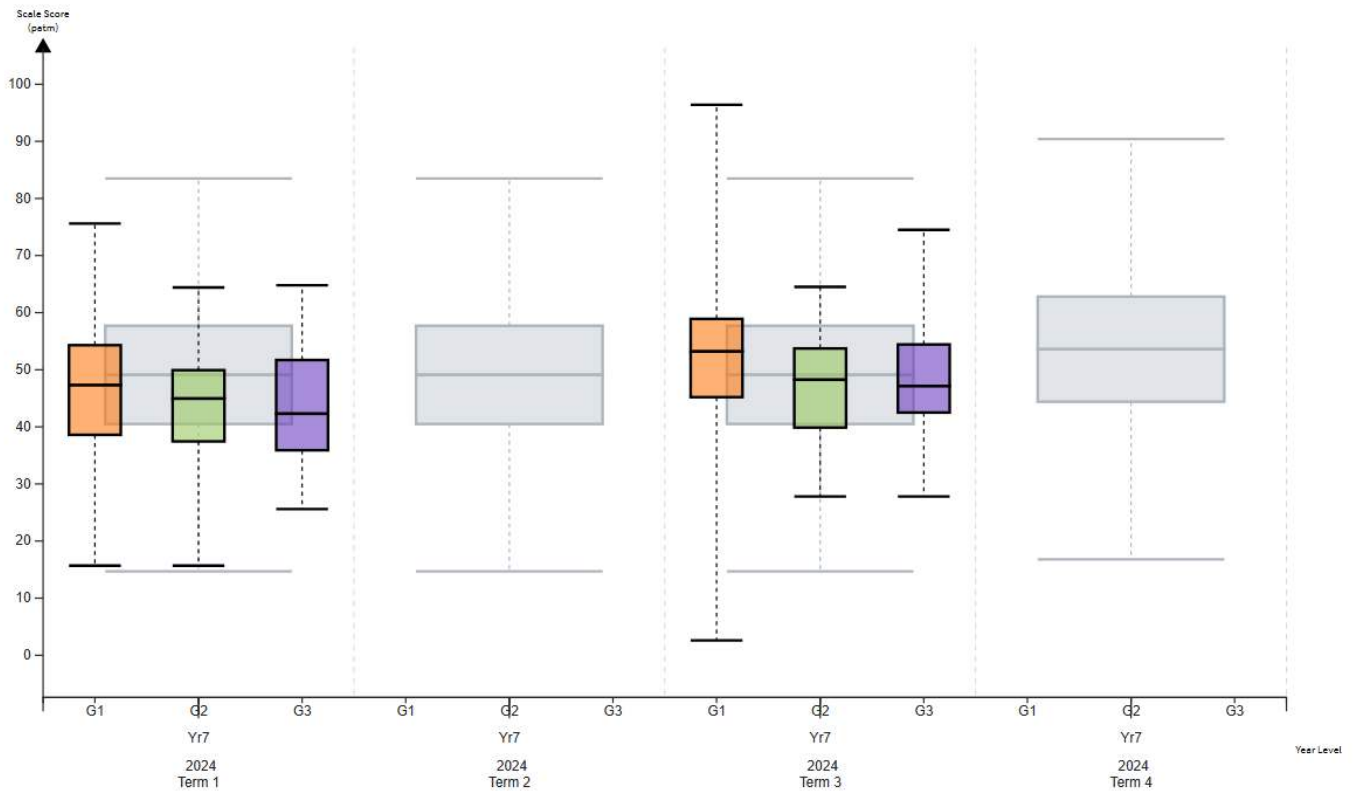
PAT Reading Year 7 2024



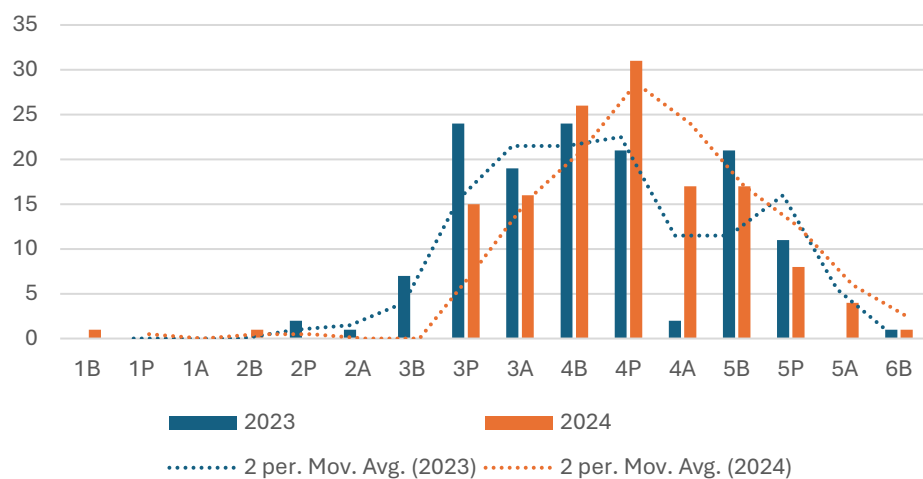
G1 All

G2 Ethnicity: Māori

G3 Ethnicity: Cook Island Maori, Fijian, Niuean, Other Pacific Peoples, Samoan, Tongan



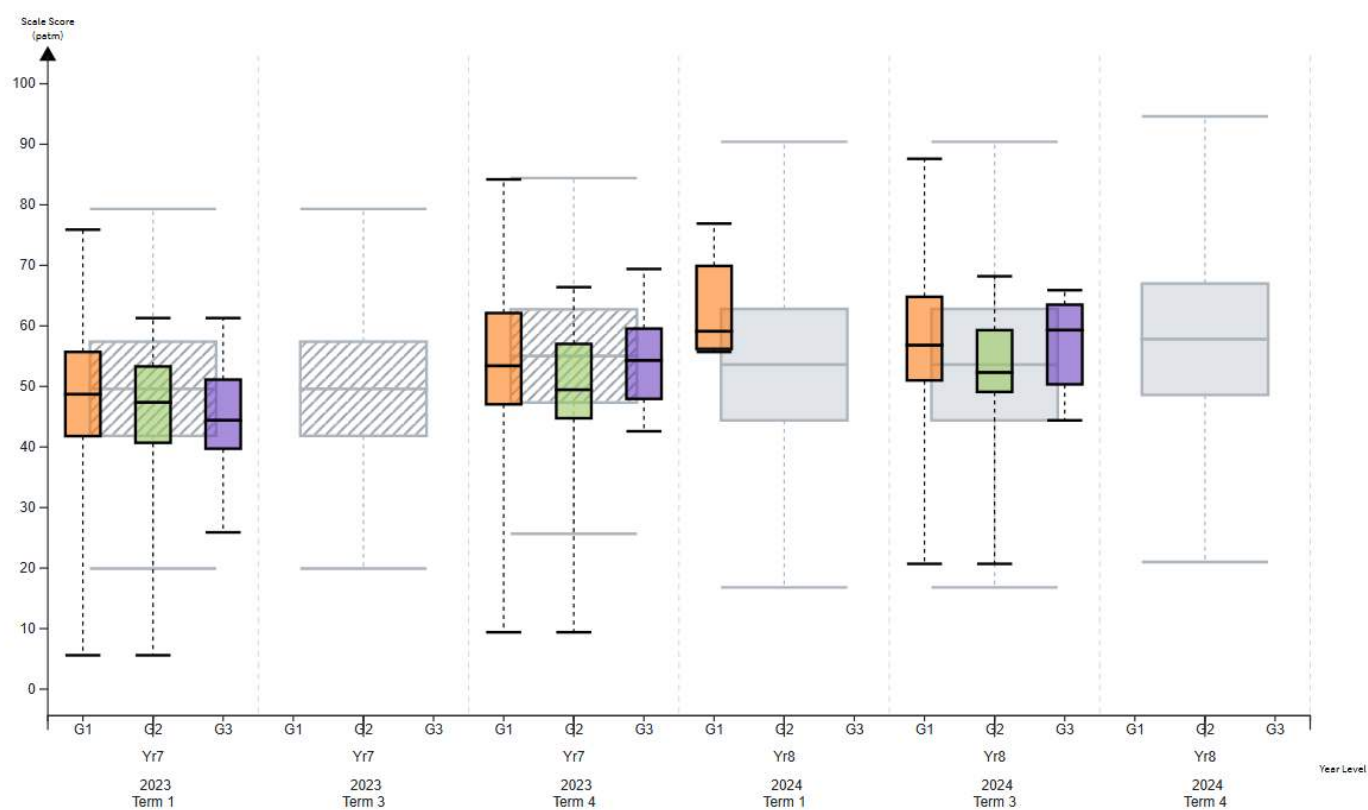
PAT Reading Comprehension 2024 Year 8



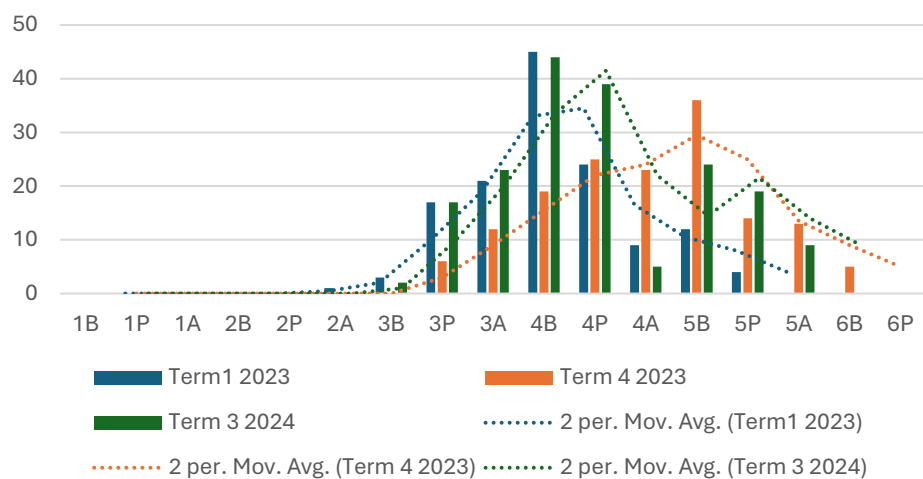
G1 All

G2 Ethnicity: Māori

G3 Ethnicity: Cook Island Maori, Fijian, Niuean, Other Pacific Peoples, Samoan, Tongan



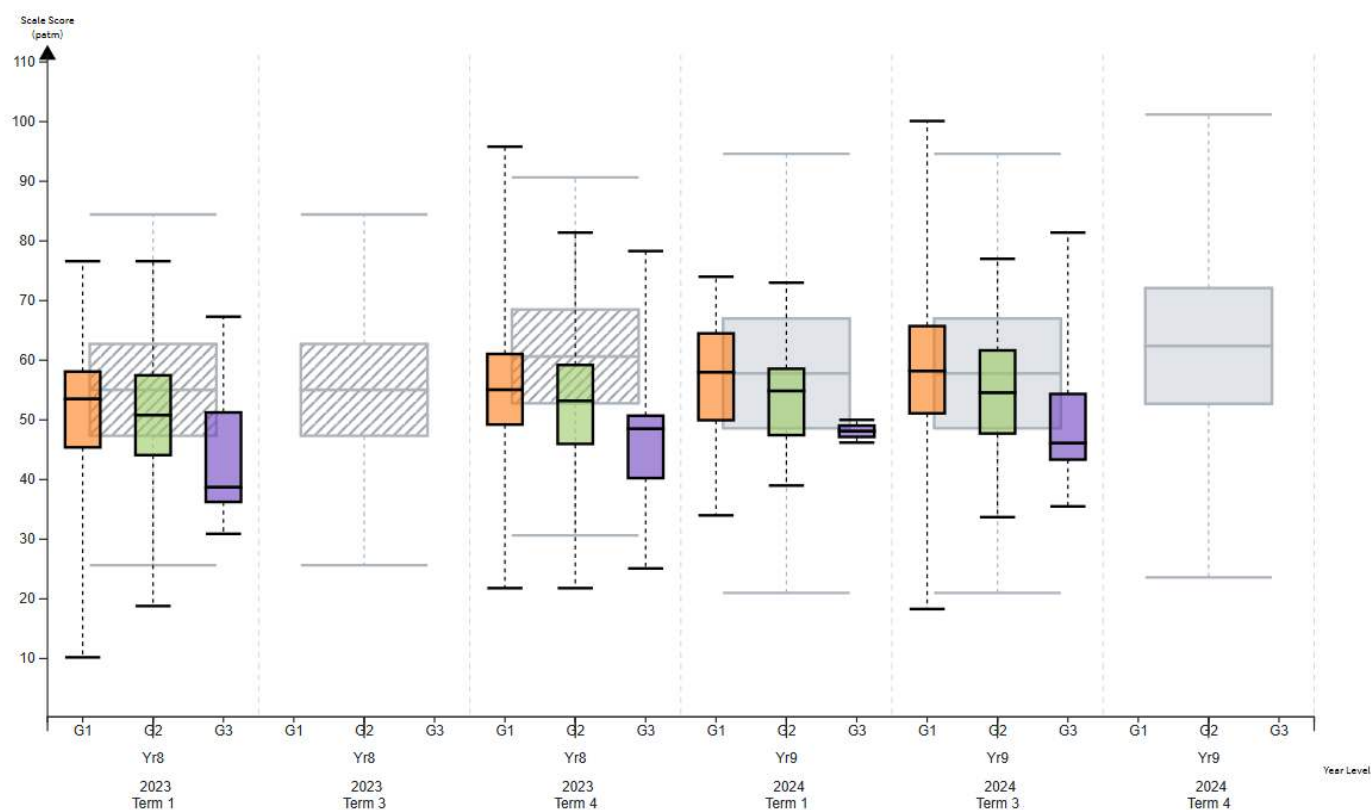
PAT Reading Comprehension Year 9 2024



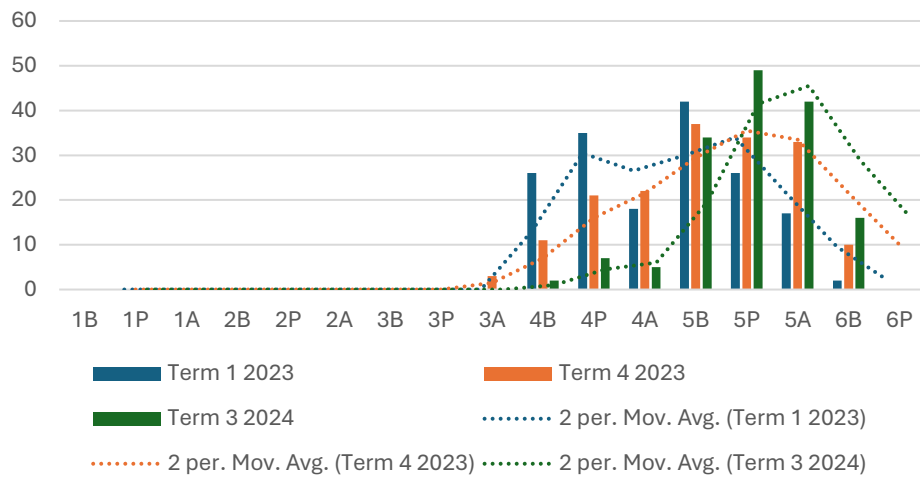
G1 All

G2 Ethnicity: Māori

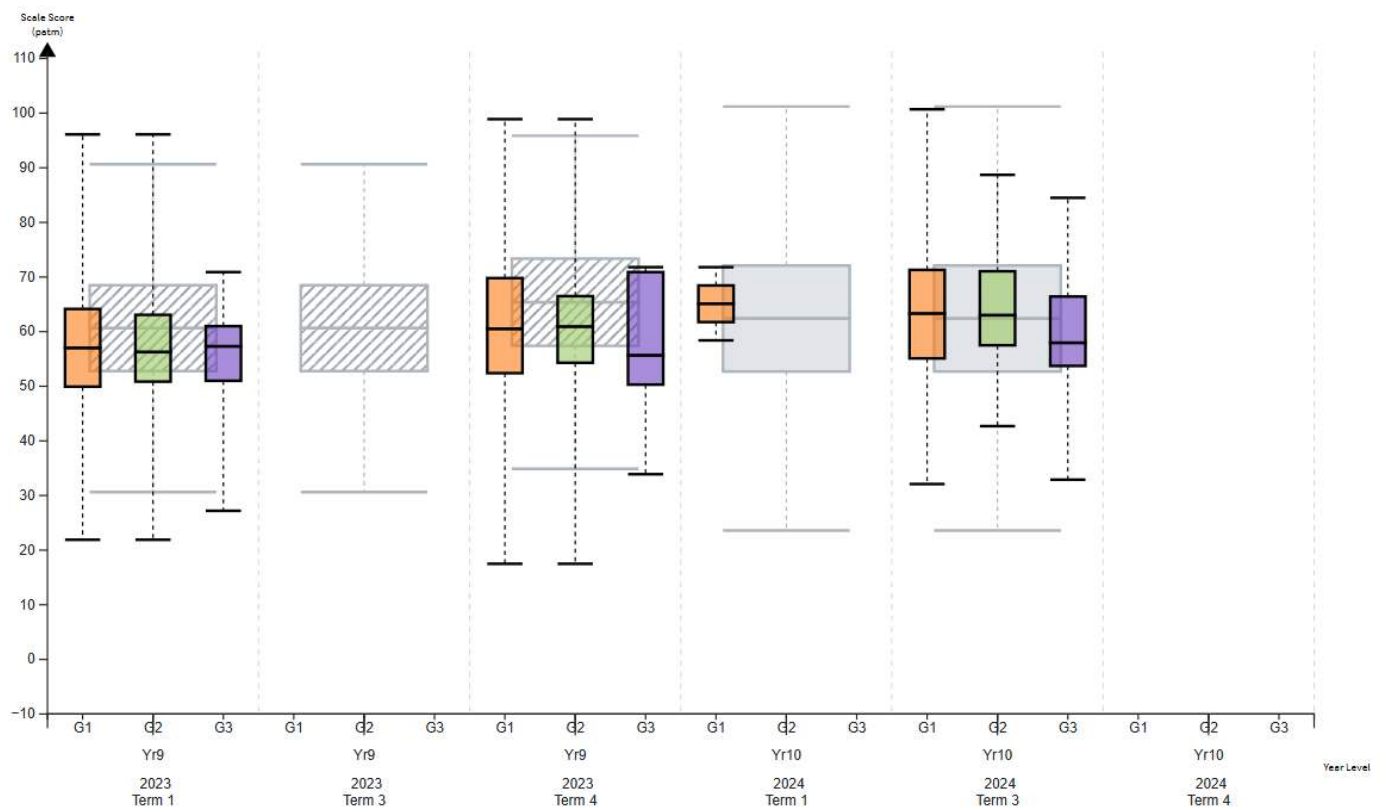
G3 Ethnicity: Cook Island Maori, Fijian, Niuean, Other Pacific Peoples, Samoan, Tongan



PAT Reading Comprehension Year 10 2024



- G1** All
- G2** Ethnicity: Māori
- G3** Ethnicity: Cook Island Maori, Fijian, Niuean, Other Pacific Peoples, Samoan, Tongan



Start of Year Achievement: Writing

	Well Below	Below	At	Above	Well Above	Total At or Above (%)
7	23 (17%)	29 (22%)	79 (59%)	2 (2%)	0 (0%)	61
8	44 (32%)	29 (21%)	66 (47%)	0 (0%)	0 (0%)	47
9	60 (34%)	27 (15%)	66 (38%)	8 (5%)	15 (9%)	53
10	34 (20%)	12 (7%)	114 (68%)	7 (4%)	0 (0%)	72

End of Year Achievement: Writing

	Well Below	Below	At	Above	Well Above	Total At or Above (%)
7	14 (10%)	24 (18%)	80 (60%)	12 (9%)	4 (3%)	72
8	17 (12%)	32 (22%)	73 (51%)	15 (10%)	7 (5%)	66
9	26 (17%)	44 (28%)	64 (41%)	10 (6%)	11 (7%)	54
10	8 (6%)	17 (12%)	102 (70%)	13 (9%)	5 (3%)	82

Accelerated Writing

	Insufficient	Expected	Accelerated	Total making required progress (%)
7	12 (9%)	64 (48%)	57 (43%)	91
8	12 (9%)	36 (26%)	88 (65%)	91
9	36 (28%)	30 (23%)	64 (49%)	72
10	34 (26%)	38 (29%)	59 (45%)	84

Accelerated Writing – Y9 2024 was our target group, 3/4s have made accelerated progress.

Start of Year Achievement: Maths

	Well Below	Below	At	Above	Well Above	Total At or Above (%)
7	25 (19%)	33 (25%)	67 (50%)	5 (4%)	4 (3%)	57
8	42 (30%)	21 (15%)	77 (55%)	1 (1%)	0 (0%)	56
9	49 (27%)	51 (28%)	68 (38%)	9 (5%)	3 (2%)	45
10	33 (20%)	37 (22%)	68 (41%)	28 (17%)	0 (0%)	58

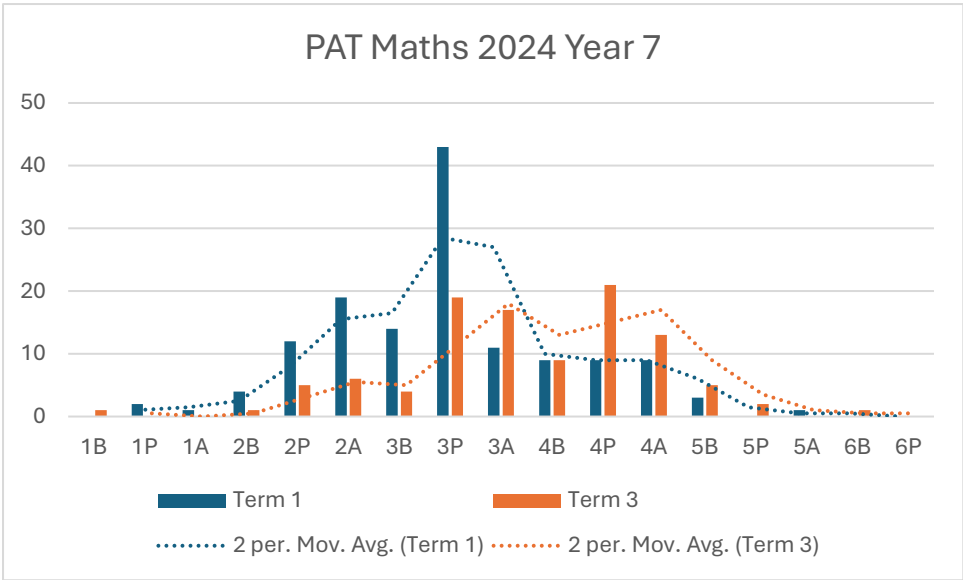
End of Year Achievement: Maths

	Well Below	Below	At	Above	Well Above	Total At or Above (%)
7	21 (16%)	29 (22%)	26 (19%)	23 (17%)	35 (26%)	62
8	18 (13%)	22 (16%)	70 (50%)	29 (21%)	1 (1%)	72
9	11 (8%)	11 (8%)	93 (64%)	27 (19%)	3 (2%)	85
10	17 (13%)	28 (22%)	26 (21%)	55 (44%)	0 (0%)	65

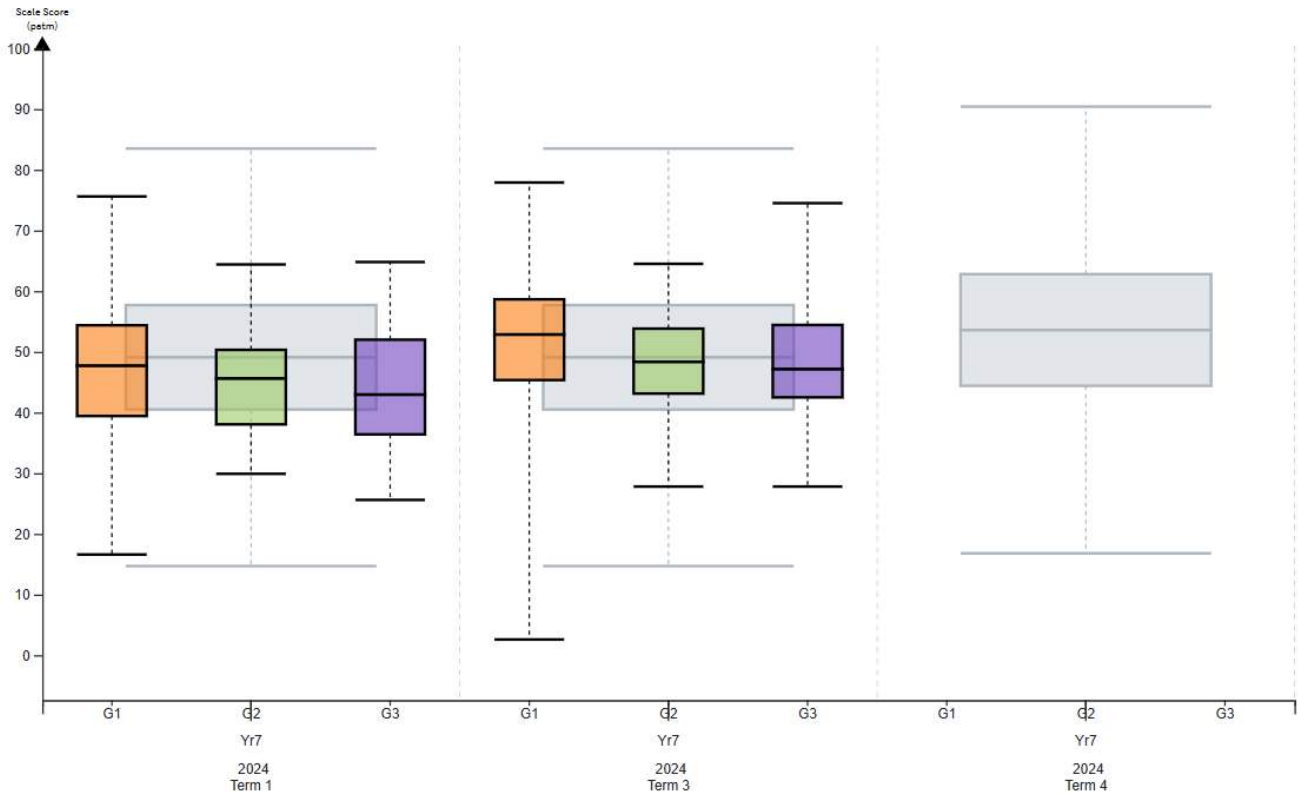
Accelerated Maths

	Insufficient	Expected	Accelerated	Total making required progress (%)
7	11 (8%)	47 (36%)	74 (56%)	92
8	11 (8%)	38 (28%)	86 (64%)	92
9	7 (5%)	30 (21%)	104 (74%)	95
10	12 (10%)	47 (38%)	66 (53%)	91

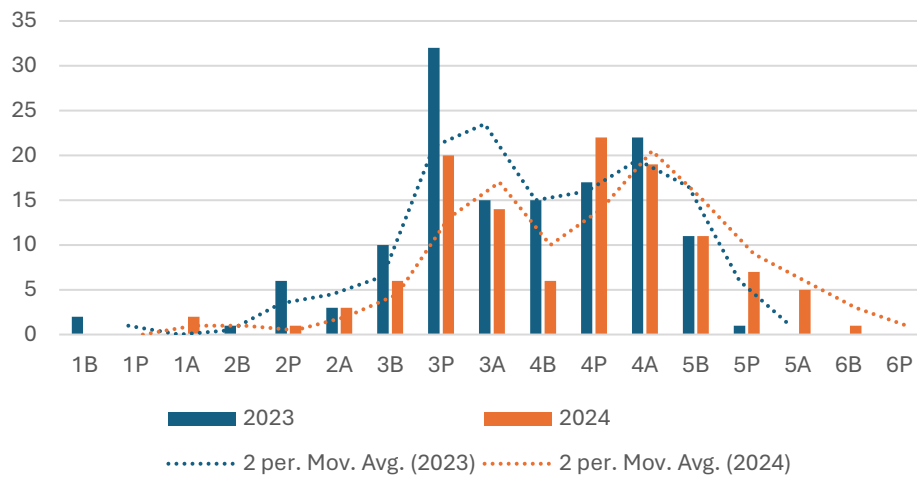
Summary of PAT Data 2024



- G1** All
- G2** Ethnicity: Māori
- G3** Ethnicity: Cook Island Maori, Fijian, Niuean, Other Pacific Peoples, Samoan, Tongan



PAT Maths 2024 Year 8



G1

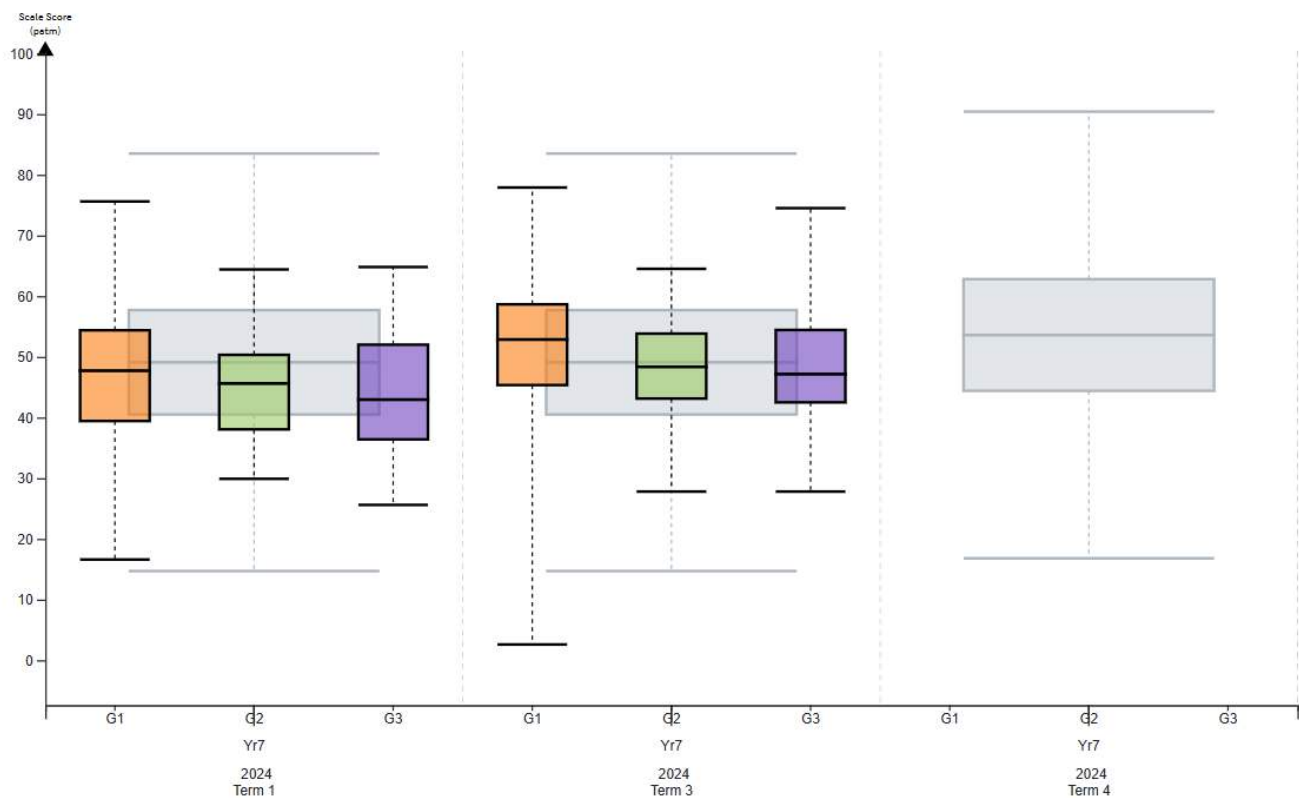
All

G2

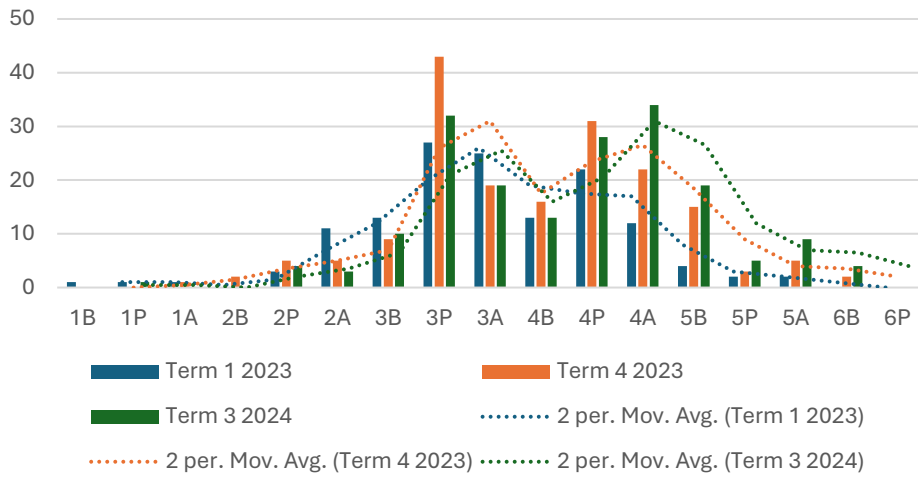
Ethnicity: Māori

G3

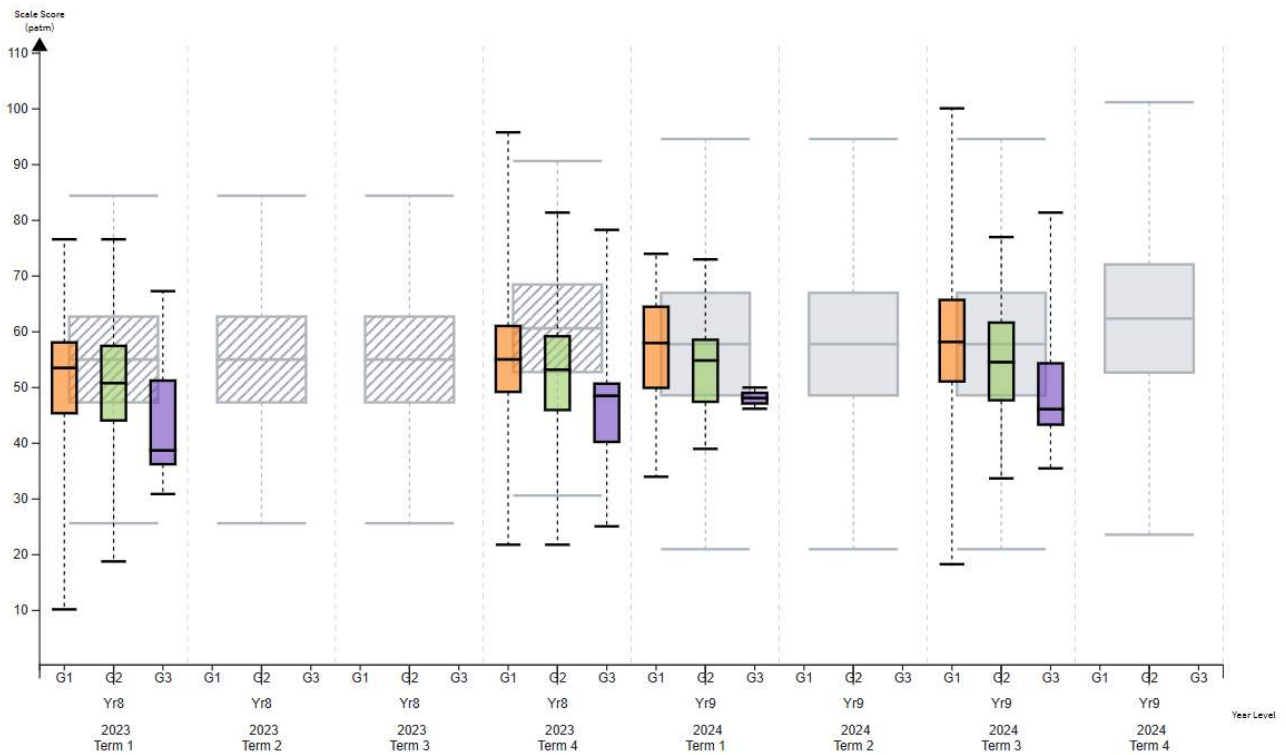
Ethnicity: Cook Island Maori, Fijian, Niuean, Other Pacific Peoples, Samoan, Tongan



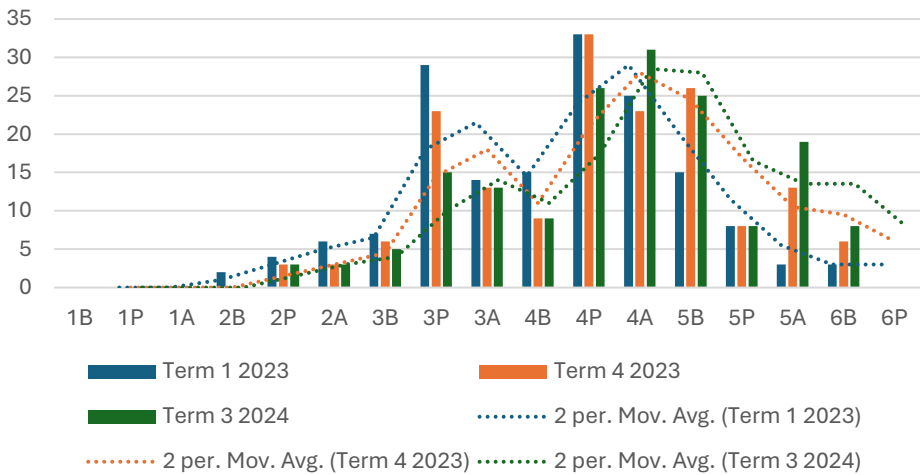
PAT Maths 2024 Year 9



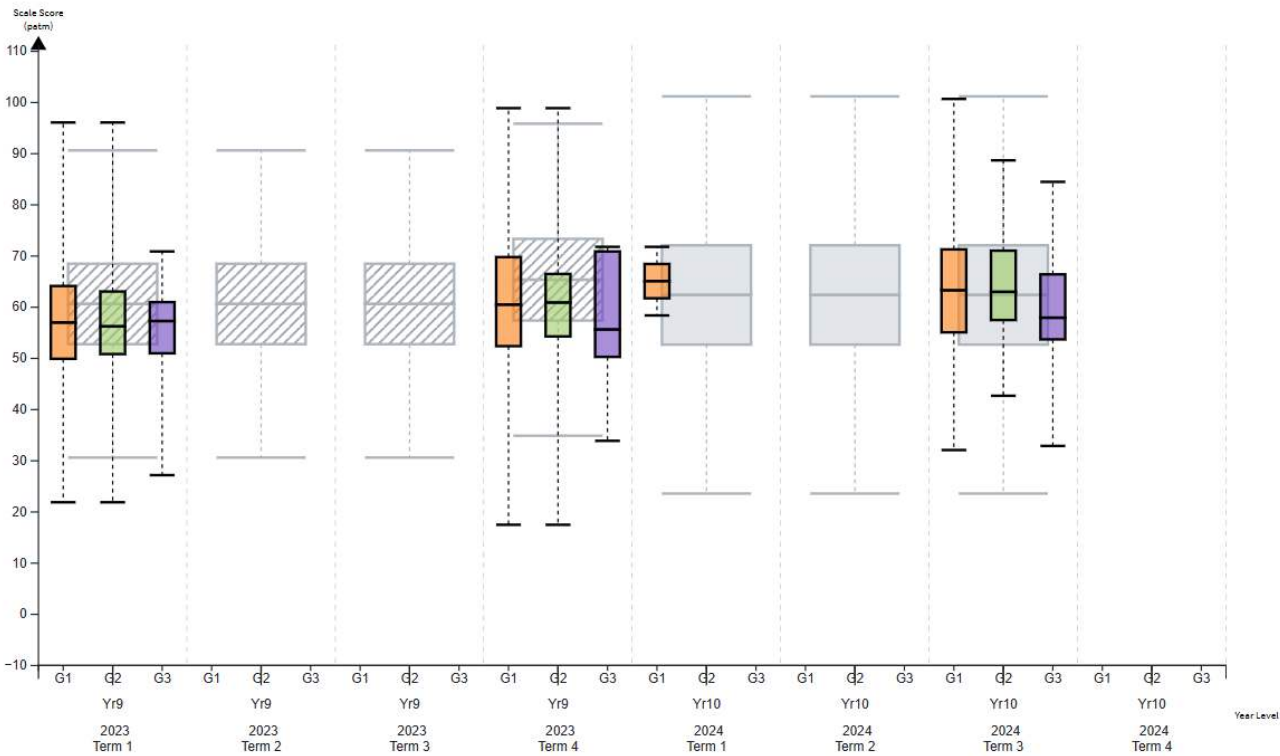
- G1** All
- G2** Ethnicity: Māori
- G3** Ethnicity: Cook Island Maori, Fijian, Niuean, Other Pacific Peoples, Samoan, Tongan



PAT Maths Year 10 2024



- G1 All
- G2 Ethnicity: Māori
- G3 Ethnicity: Cook Island Maori, Fijian, Niuean, Other Pacific Peoples, Samoan, Tongan



Literacy and Numeracy Data Summary 2024

CAA Percentage Passed for students in Year 10

	Year 10 Students Percentage Pass (%)			
	Reading	Writing	Literacy	Maths
June 2023	65	45		51
October 2023	79.7	83		64
June 2024	70	54		45
September 2024	88.95	91.28	83	64.53

CAA Percentage Passed for all students in Year 11

	Literacy	Numeracy
December 2024	94	84

Pilot Tutoring Groups Y11

18/25 students gained Literacy (72%)

15/19 students gained Numeracy (79%)

CAA Percentage Passed by ethnicity June 2024 for students in Year 10

	Reading	Writing	Maths
All students (% pass)	70	54	45
Māori (% pass)	69	58	41
Pacifica (% pass)	67	50	0

CAA Percentage Passed by ethnicity September 2024 for students in Year 10

	Reading	Writing	Maths
All students (% pass)	88.95	91.28	64.53
Māori (% pass)	85.29	94.12	61.76
Pacifica (% pass)	66.67	83.33	0

CAA Raw data Y11+ June 2024

	Literacy	Reading	Writing	Numeracy
Total # Yet to Pass	30	19	25	49
# of Māori Yet to Pass	7	4	4	14
# of Pacifica Yet to Pass	2	2	2	2

CAA Raw data Y11+ September 2024

	Literacy	Reading	Writing	Numeracy
Total # Yet to Pass	12	9	11	28
# of Māori Yet to Pass	3	2	3	11
# of Pacifica Yet to Pass		2	2	3

2025 Year 11 students yet to gain Literacy / Numeracy

	Literacy	Literacy (%)	Numeracy	Numeracy (%)
Total	32/175	18	66/175	37.7
Māori	6/36	16.6	15/36	41.6
Pacifica	3/7	42.8	7/7	100
Pākehā / NZ European	21/116	18	40/116	34.5
Other	2/16	12.5	4/16	25

Level 1 Literacy and Numeracy

	SGHS Pass (%)	National Pass (%)	School Equity Index Pass (%)
Literacy	95.1	76.6	82.2
Numeracy	85.3	74.8	79.6

NCEA Data 2024 @ 8.3.2025

Qualification	SGHS Pass (%)	National Pass (%)	School Equity Index (%)	National Girls (%)	School Equity Index Girls (%)
L1	79.7	44.2	56.2	47.9	59.9
L2	88.7	71.7	79.3	75.6	83.3
L3	76.8	66.9	67.9	71.9	75.0
UE	58.9	44.7	42.6	56.1	56.6

NCEA Data for Level 3 (not including leavers and those not completing a full Level 3 course).

Qualification	SGHS Pass (%)
L3	85
UE	63.4

NCEA Data 2024 by Ethnicity

Qualification	SGHS All students Pass (%)	SGHS Māori Pass (%)	National Māori Pass (%)	SGHS Pacific Peoples (%)	National Pacific Peoples (%)
L1	79.7	65.5	40.9	54.5	38
L2	88.7	80.0	65.4	75.0	65.8
L3	76.8	76.7 (n=31)	59.0	50.0 (n=6)*	64.6
UE	58.9	63.3 (n=31)	31.9	16.7 (n=6)*	32.2

*3/6 students did not complete the year. The 3 students who completed the year all gained Level 3 (100%), while 1/3 gained UE (33.3 %).

NCEA Endorsements

	SGHS Merit (%)	National Merit (%)	School Equity Index Merit (%)	SGHS Excellence (%)	National Excellence (%)	School Equity Index Excellence (%)	SGHS Combined Endorsement (%)	National Combined Endorsement (%)	School Equity Index Combined Endorsement (%)
L1	36.8	28.2	27.2	18.4	11.2	9.5	55.2	39.4	36.7
L2	33.1	24.5	21.6	13.6	15.5	12.5	46.7	40	34.1
L3	34.9	25.7	22.7	9.3	14.1	12.2	44.2	39.8	34.9

